

**ALLDAY  
& MILLER**



St. Clement Close, Uxbridge, UB8 3ST  
£1,400 Per month

1 1 1



St. Clement Close, Uxbridge, UB8 3ST

**£1,400 Per month**

- First Floor Maisonette
- Additional Home Office
- Ample Unrestricted Parking
- Private Entrance
- Newly Refurbished Throughout
- Private Rear Garden
- Modern Kitchen With Seated Breakfast Bar
- Short Walk From West Drayton Station

## Description

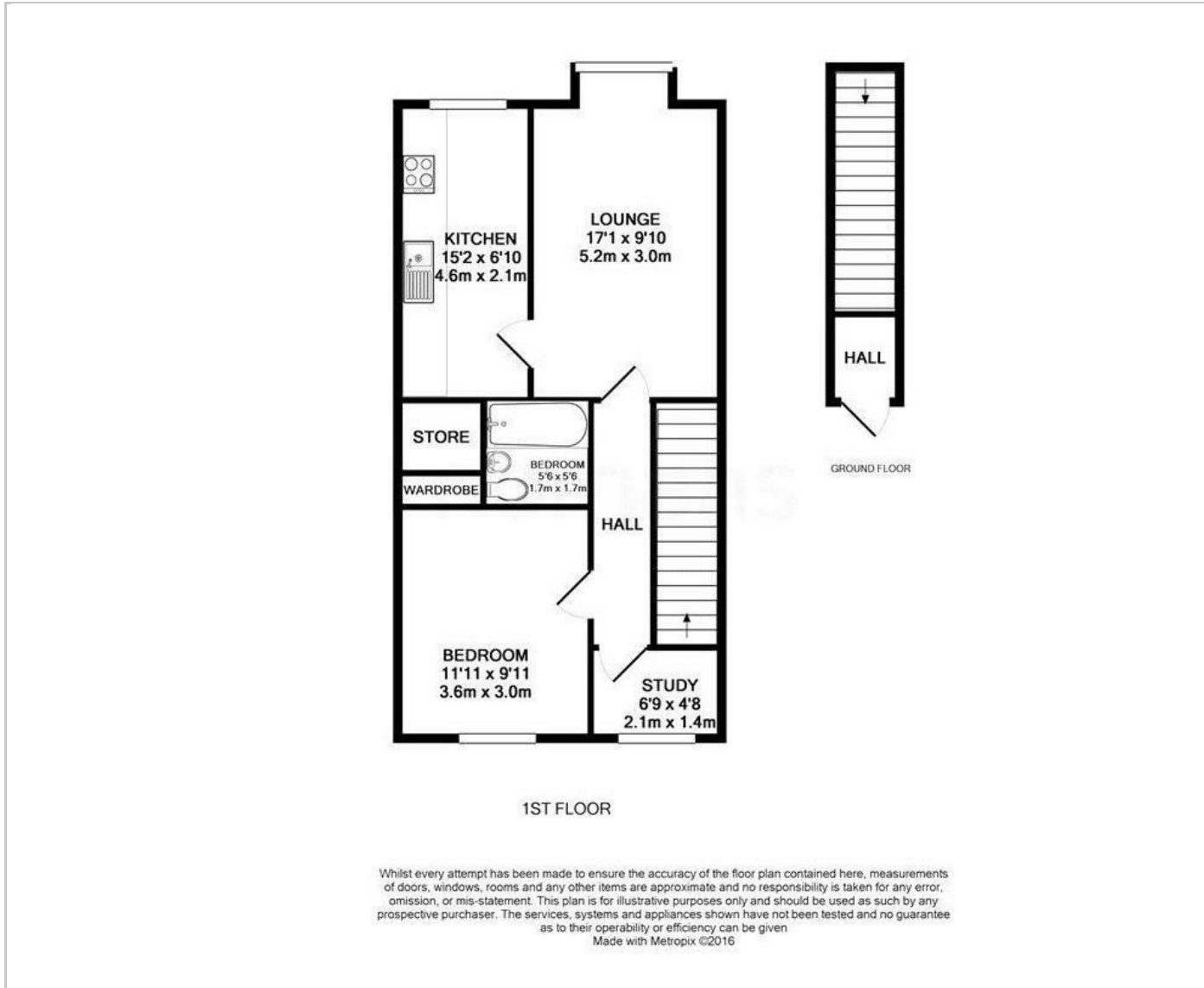
Situated a 0.8 mile walk from West Drayton station, this first floor maisonette is super convenient for commuters, yet still provides a peaceful residence. The apartment is situated on the first floor, with private access at ground level. The property has been lovingly refurbished throughout, boasting a contemporary kitchen with seated breakfast bar and all appliances, bright reception room, spacious double bedroom with ample storage, stylish bathroom plus an addition home office. To the rear is a fenced and gated private paved garden, there is also plenty of unrestricted parking to the front of the apartment.

## Situation

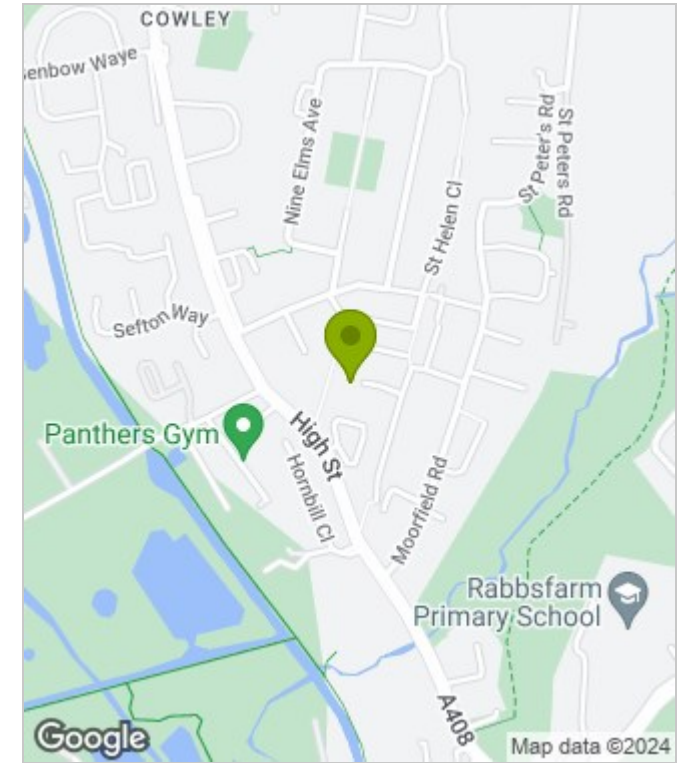
St. Clements Close is situated off the Cowley High Road, within easy reach of local shops, schools, Brunel University, Hillingdon Hospital and bus links to West Drayton Train Station and Uxbridge Town Centre with its multiple shopping facilities, restaurants and bars and the Metropolitan/Piccadilly Line Station.



## Floor Plans



## Area Map



## Energy Performance Graph



These particulars, whilst believed to be accurate are set out as a general outline only for guidance and do not constitute any part of an offer or contract. Intending purchasers should not rely on them as statements of representation of fact, but must satisfy themselves by inspection or otherwise as to their accuracy. No person in this firm's employment has the authority to make or give any representation or warranty in respect of the property.